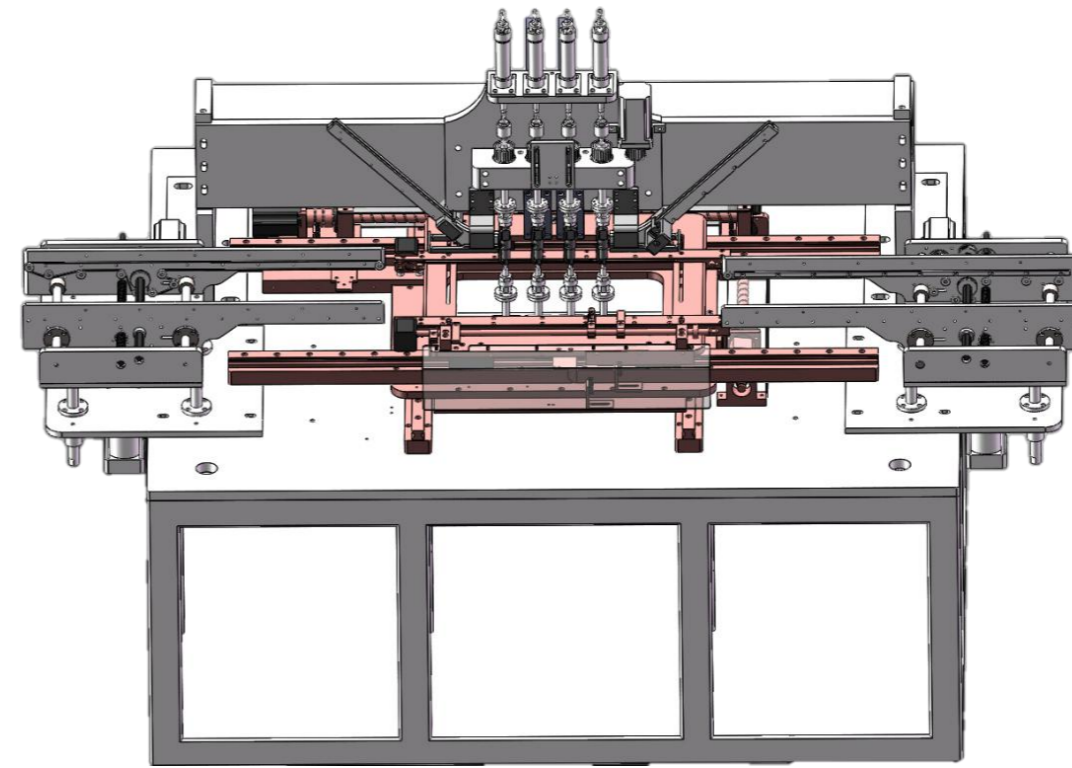
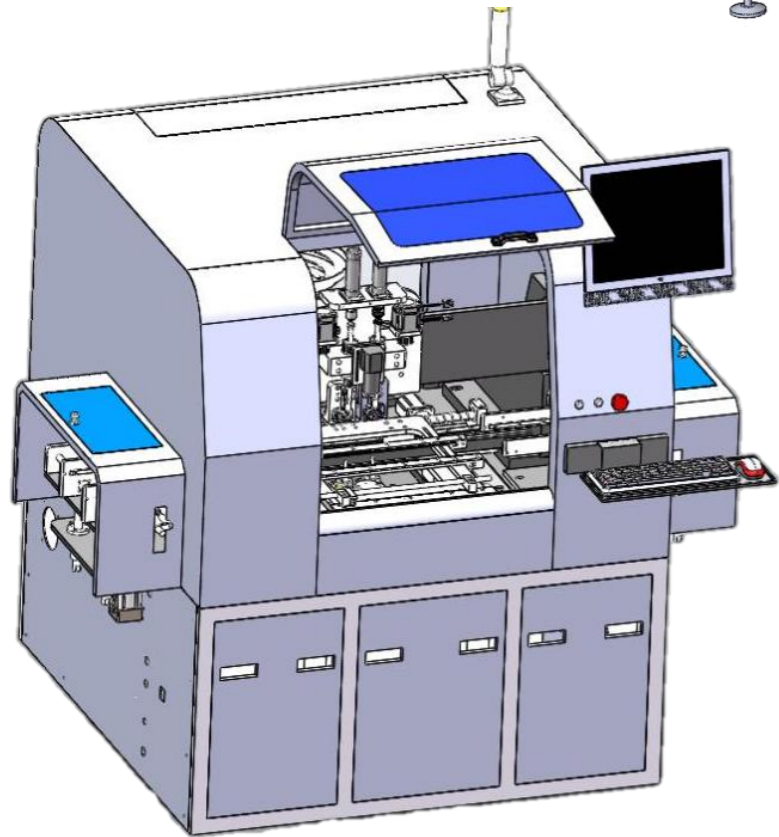
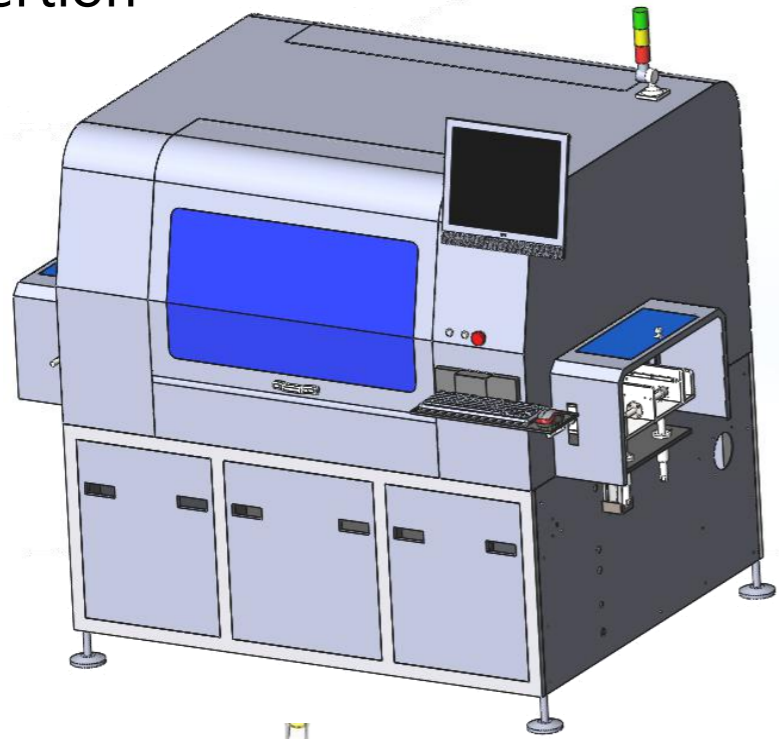


S-7000T Terminal Insertion

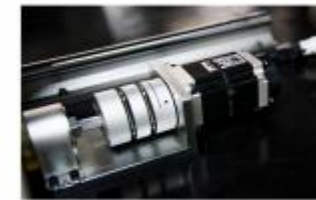


S7000T brings a new level of productivity to terminal component insertion
Efficient and stable insertion can be process any manufacturer's reel and bulk terminal

- high real throughput(6000CPH)
- World-classreliability(1000ppm)
- Manual Load or Automatic PCB Load/Unload
- Up to 4 different compo-nents can be applied in one machine
- Apply products at up to 4 different angles
- Windows-based operating system
- Servos+motors control
- Quick change head system, allow production flexibility. (Optional)
- insertion verifi-cation, and Inward clinching/Outward clinching/"N". (Optional)
- Pass the IPC-9704 stress test standard to ensure that the stress value of each insertion is within $\pm 400\mu e$



1.5 KW head-driven motor



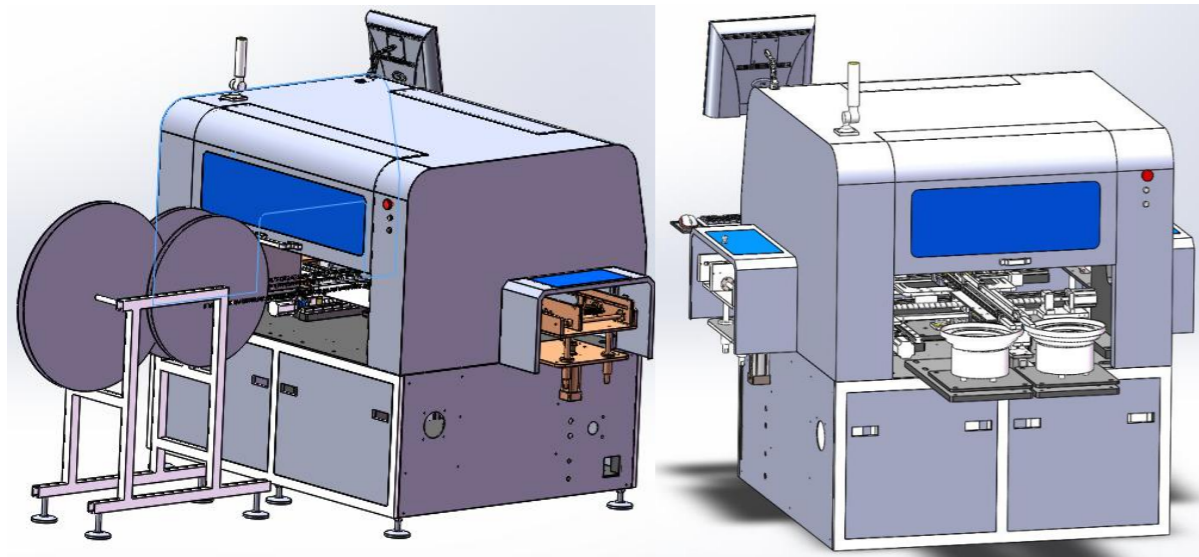
400W X-Y table motor



Full servo system

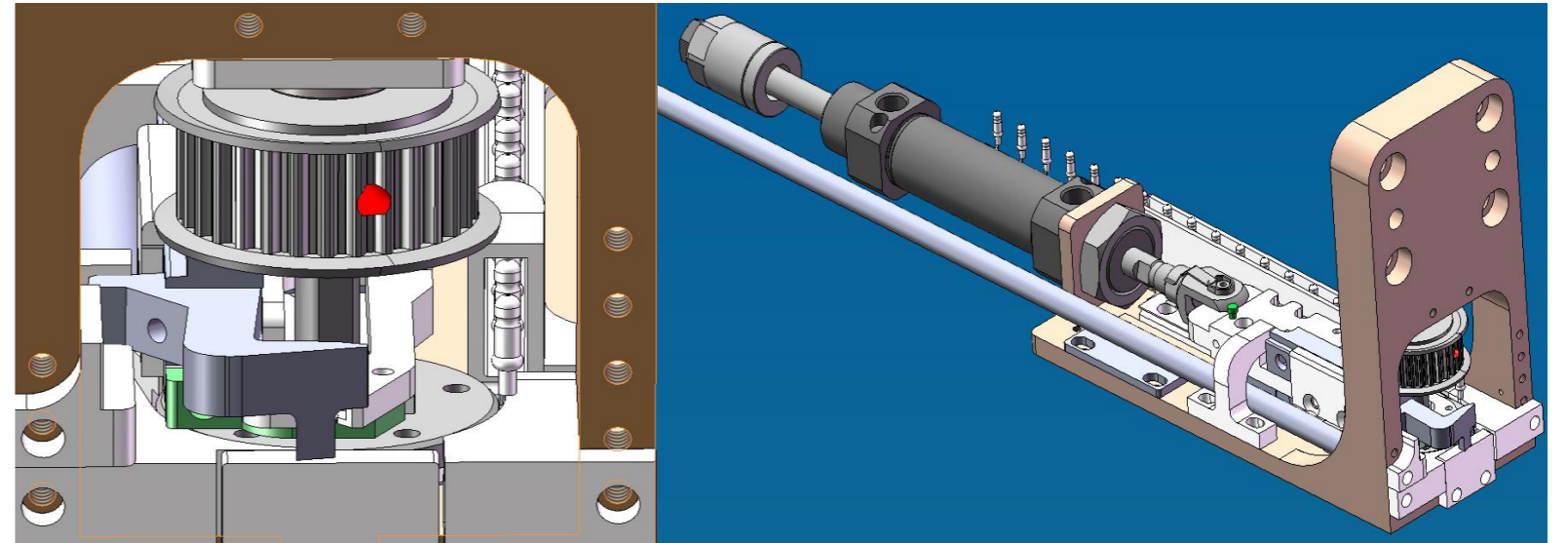
Insertion rates up to 2 per second at 0.2 in (5.08 mm) pitch.

Full Panasonic Servo Drive System bring high hroughput(6000CPH) and reliability(1000ppm)



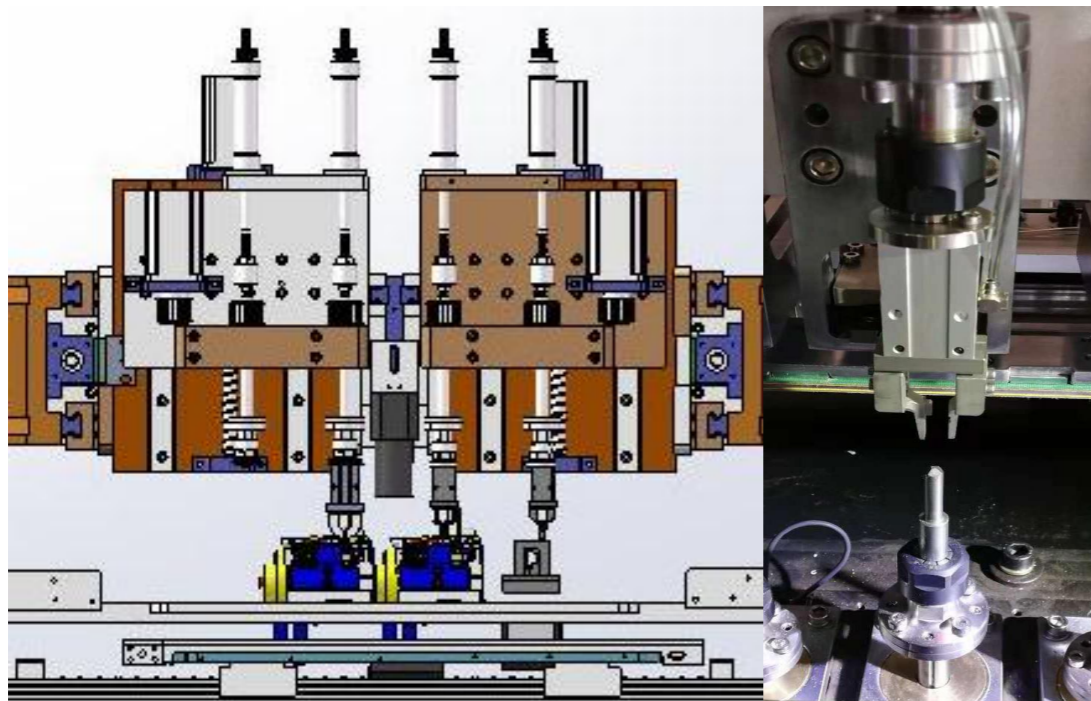
Tape feeder and bulk feeder installation

Different terminal packaging configurations with different feeders(Up to 4)



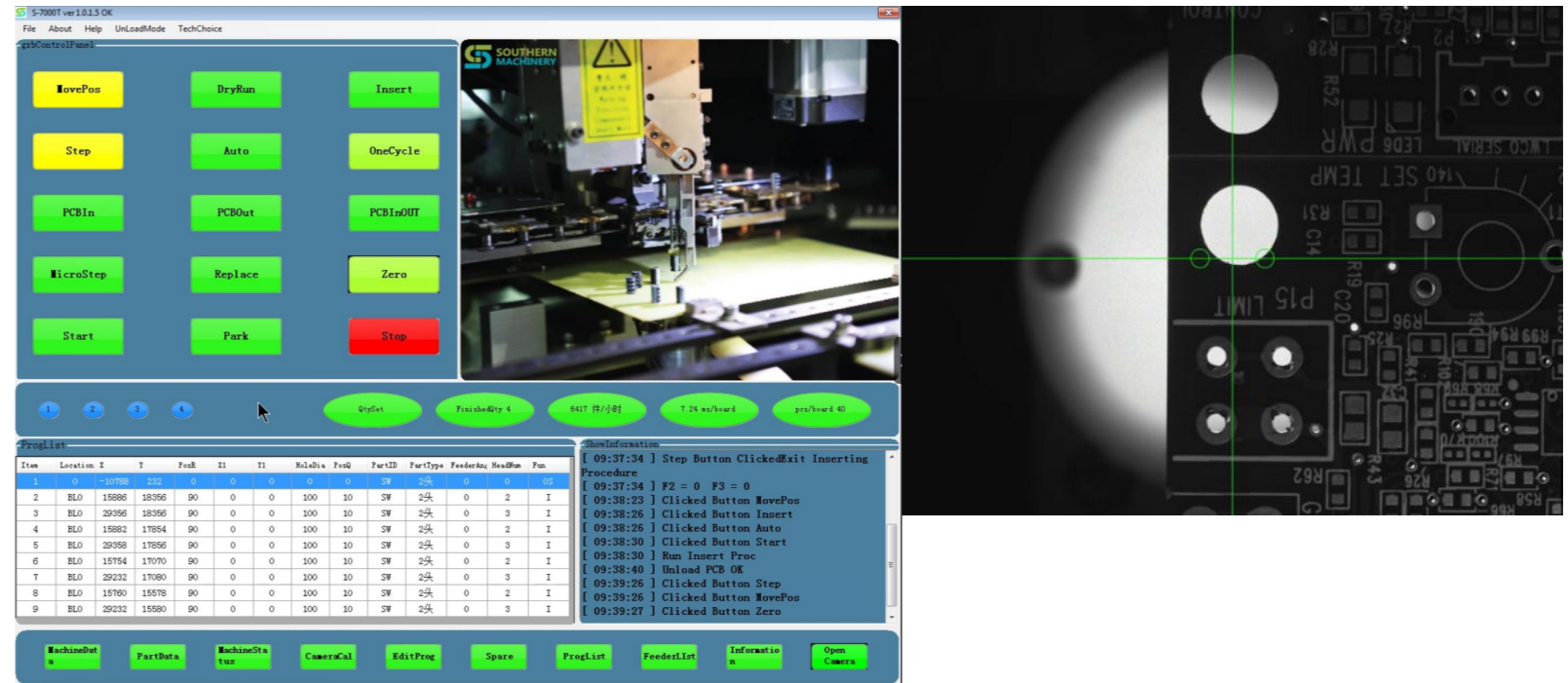
Feeding system

Panasonic servo motor control ensures the accuracy of each feeding



Insertion and clinching system

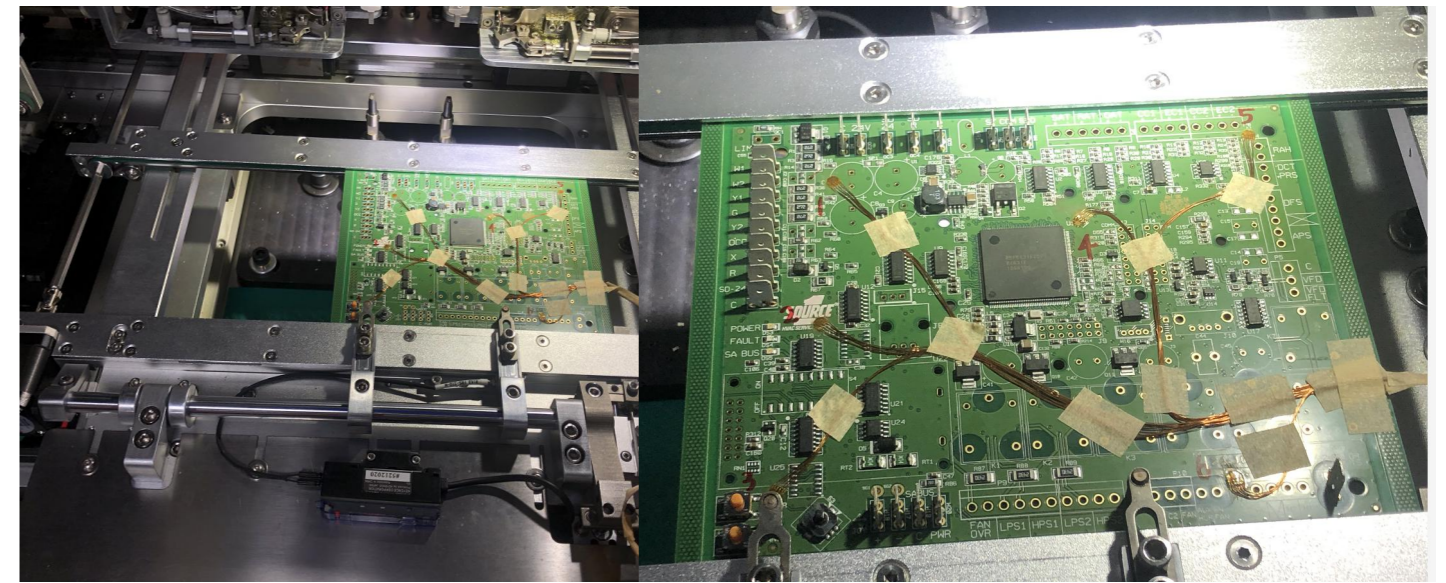
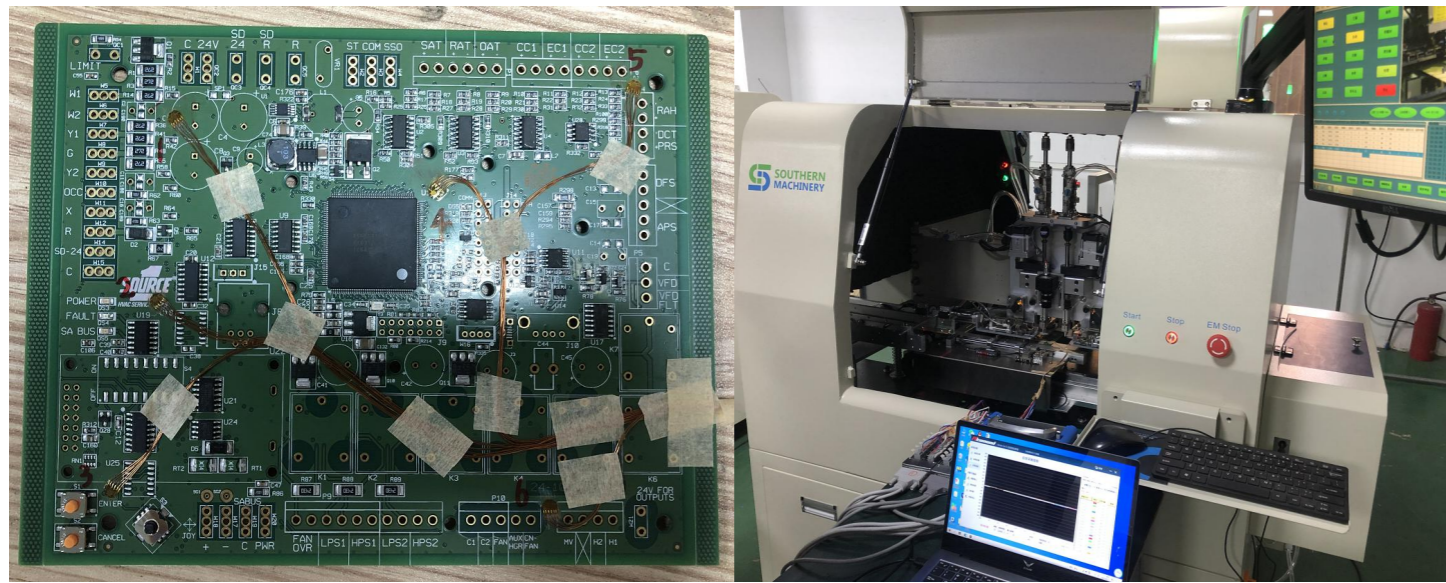
Clinching system detects that the each insertion has completed successfully Go to the next step



Insertion and clinching system

Camera visual operating system makes programming faster,the opeator can finish a new PCB insertion program within 5 minutes

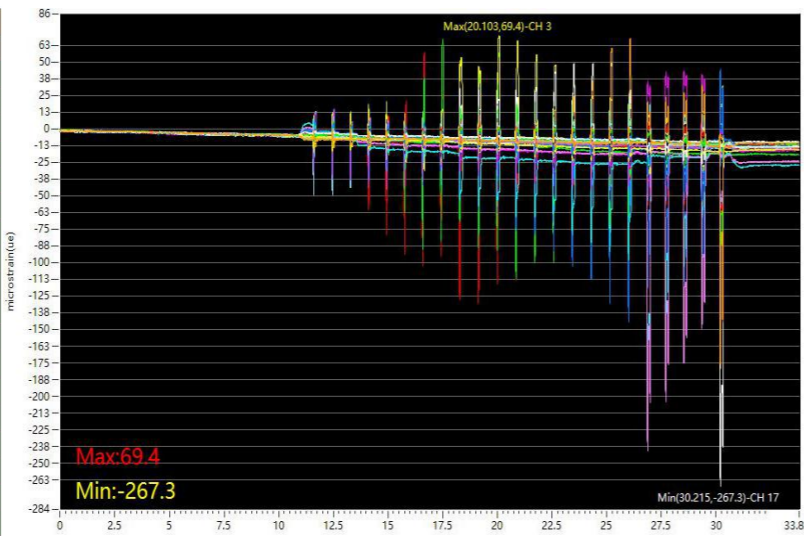
IPC-9704 stress test



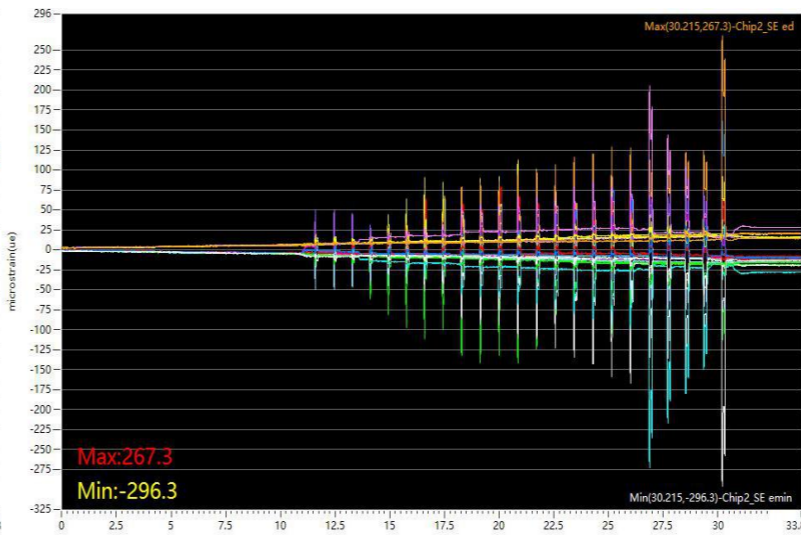
① Use a triaxial strain gauge to perform 5-32 test points on the PCB, each point has a stress value of 0°, 45°, and 90° in three directions

② After the insertion is completed, first check the stability and verticality of the terminal on the PCB. If qualified, continue to analyze the test data

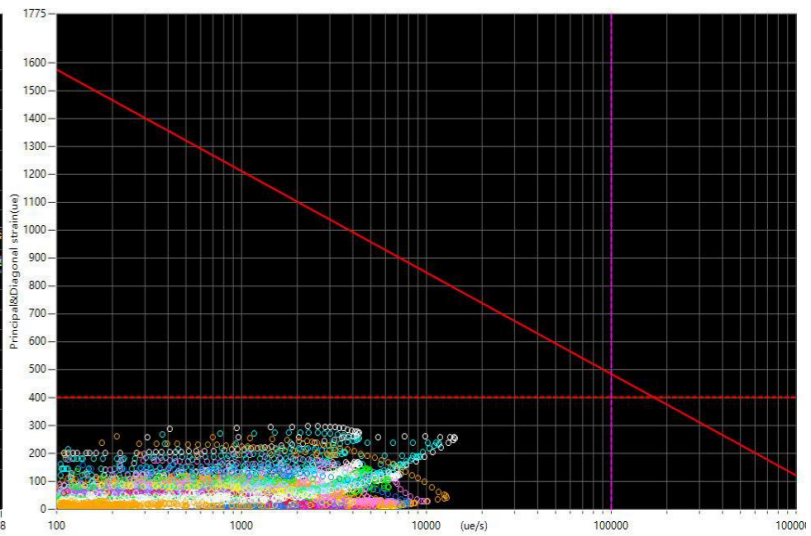
Single Channel Value:				Strain Limit:		±400ue
Channel Name	Color	Max(ue)	<<Time(s)	Min(ue)	<<Time(s)	Result
Sensor_1	CH 1	57.1	16.694	-130.9	19.163	Pass
	CH 2	67.1	17.532	-111.8	20.877	Pass
	CH 3	69.4	20.103	-39.7	17.452	Pass
Sensor_2	CH 4	5.4	14.211	-144.5	26.027	Pass
	CH 5	49.1	25.261	-26.5	26.871	Pass
	CH 6	67.6	26.113	-20.6	27.704	Pass
Sensor_3	CH 7	43.3	28.552	-29.1	26.096	Pass
	CH 8	14.7	30.213	-204.6	26.888	Pass
	CH 9	5.9	20.878	-240.8	26.89	Pass
Sensor_4	CH 10	21.8	23.451	-37.2	11.622	Pass
	CH 11	20	26.894	-80.8	30.218	Pass
	CH 12	14.6	12.547	-76.7	30.218	Pass
Sensor_5	CH 13	5.4	26.895	-83.4	30.213	Pass
	CH 14	5.3	12.538	-91.2	30.213	Pass
	CH 15	35	30.22	-37	28.549	Pass
Sensor_6	CH 16	44.6	30.214	-54.6	29.377	Pass
	CH 17	-1.2	11.724	-267.3	30.215	Pass
	CH 18	33.1	29.376	-179	30.215	Pass



Single Channel data and chart value analysis



Principal&Diagonal Strain Value analysis



Strain VS Rate VS PWB analysis

Each machine strictly passes the IPC-9704 stress test before shipment to ensure the safety and stability of the machine

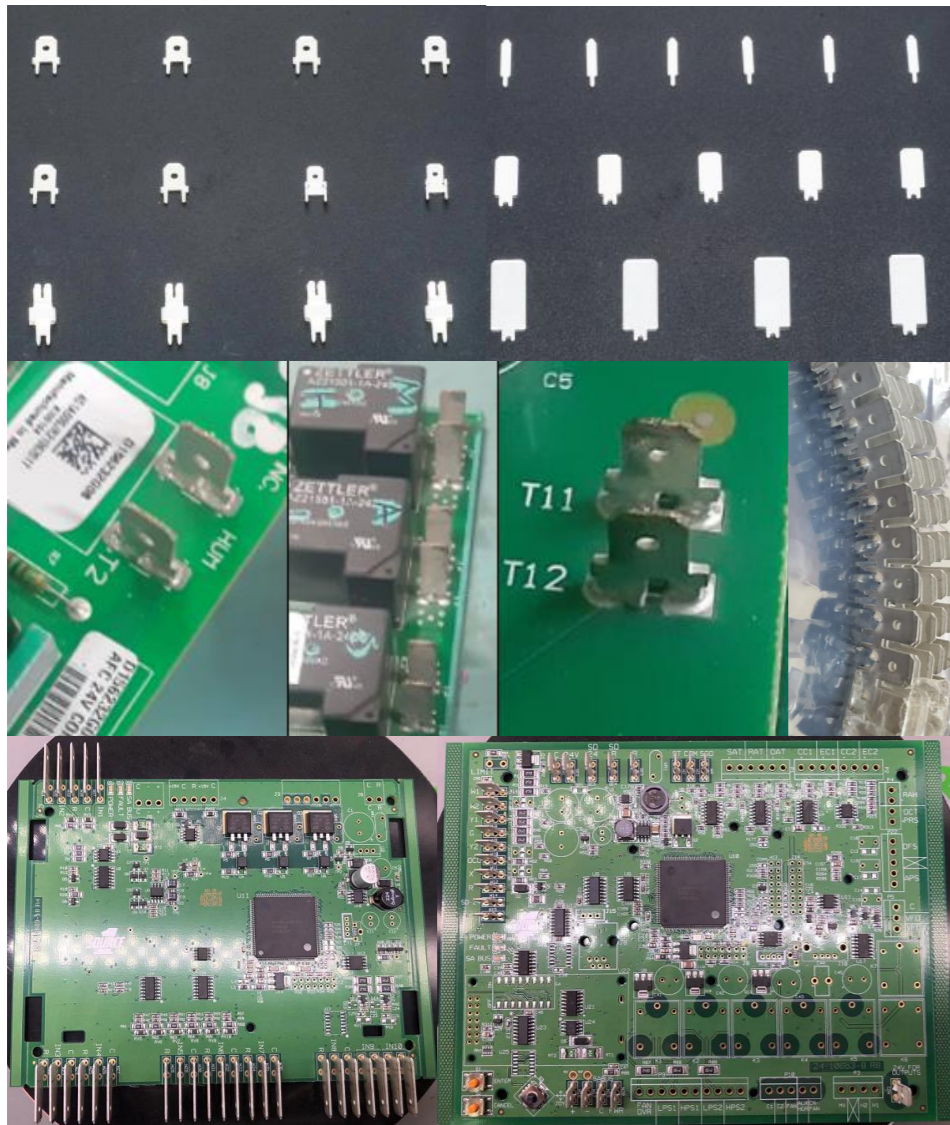
Application:

Home appliance industry

The car industry

The power industry

Other electronics industry: digital watches, electronic components, etc



The expert of through-hole automation

Machine specification:

Equipment size	1700mm*1300mm*1600mm (2 heads)
Packaging	Tape terminal, bulk terminal
Equipment weight	1200KG
PCB size	380mm*280mm (enlarged size can be customized)
Number of insertion heads	1-4 Optional
terminal thickness	≥0.5mm ≤1.2mm
Vertical error	≤0.8°
PCB requirements	The insertion hole is 0.5±0.1mm larger than the component foot
Insertion angle	360°(increment 1°)
Body distance	The distance between the components ≥ 2mm
Clinch	Inward clinching/Outward clinching/"N"
Humidity	30%-70%
Display system	17-inch color LCD monitor
Feeding system	Tape feeder or Bowl feeder + feeding guide
Motion accuracy	0.001mm/pulse
Motion system	Panasonic controller, motor
Programming function	Online visual programming, visual correction, EXCEL
Data import	USB interface import, manual entry
Communication interface	RS-232C (can be connected to MES system)
Power	Single 220V/AC, 50/60HZ, 2KVA



info@smthelp.com

www.smthelp.com